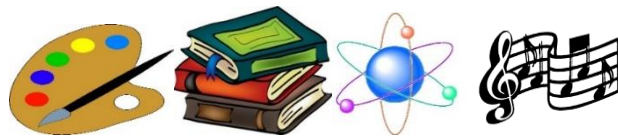


Fine Arts & Academics



MANUAL

(Revised by FAA Committee February 2016. Rounds Schedule included.)



T★CAL FINE ARTS & ACADEMICS MANUAL

DISTRICT & STATE MEET CRITERIA

ENTRY PROVISIONS AND DETAILS

- *Registration:* Registration Forms must be received no later than two weeks prior to meet. Mail Registration Forms to: TCAL Office, PO Box 760211, San Antonio, TX 78245 or fax: 210-675-7602. A per entry fee is applicable of \$8 per entry; \$10 per entry if paid after the deadline.
- Each school may enter the following participants (grades 7th-12th, no solo 7th-8th may enter):
 - ACADEMIC: up to three participants in each category
 - SPEECH/DRAMA: up to three participants in each category PLUS each school is allowed 1 One-Act Play entry and 1 Reader's Theatre entry
 - ART: up to three participants in each category
 - DANCE: up to two entries
 - HUMAN VIDEO: up to two entries
 - MUSIC: up to three participants in each category PLUS one band entry and one choir entry
- Each participant may compete in one Academic or Speech event per Round to avoid performance schedule conflicts (see Rounds Schedule at end of this Handbook). Each participant may compete in:
 - SPEECH/DRAMA CATEGORIES: up to 3 events *not counting One-Act Play or Reader's Theatre*
 - ACADEMIC CATEGORIES: up to 3 events
 - ART CATEGORIES: up to 3 entries *not counting On-Site Drawing*
 - MUSIC CATEGORIES: up to 2 events *not counting Human Video, Dance, Band or Choir*
- *Check-in and Orientation:* Each school must check in at the registration tables at least 1 hour before the Meet begins on the day in which the school's students compete. All art entries must be registered at the Art Registration desk by 8 a.m. on Day 1. Art teacher walk-through will occur at 8:30 a.m. to ensure artwork is placed in proper Categories. Art judging begins at 9 a.m. A posting board will list the schedule of events, room locations, preliminary results for events with a Finals Round, and messages for schools.
- *Event Volunteers:* A sufficient number of Judges, Proctors & Graders are a key aspect of this competition. There will be three judges scheduled on a rotating basis for each performance round and at least two Art Judging Teams. Schools must bring volunteers based upon their school's entries: Speech/Drama (1 proctor/grader per every 5 entries); 1 judge assigned to events the school did not enter (if possible); Academic (1 proctor/grader for every 5 entries); and Art (1 art judge to join the Art Judging Teams).
- *Dress Code:* The Dress Code for all participants and volunteers is "Sunday Best"; no jeans, t-shirts, midriffs, short skirts, tight clothing, low-cut shirts, and/or tank tops (e.g., cannot be revealing, provocative, or sagging)
- *Items used during Events:* Chairs provided. Participants must bring their own lined paper, ink pens, calculators and art supplies. *See event requirements regarding permitted and prohibited calculators.* No cell phones/other electronics allowed in event rooms.

Delivery Criteria

- Participants will be judged on delivery skills (e.g., voice, gestures, poise, diction, fluency, style).
- Introductions: Must contain script title and author and a brief description to set the scene/mood for the performance; the Introduction can begin the performance or can be imbedded shortly after performance begins.
- Timing of a performance begins with the first word or sound uttered by the participant.
- Judging Sheets will reflect how event criteria is determined, judged, and scored.
- No costuming is permitted with the exception of One-Act Plays.

Script Criteria (Monologue, Readers Theatre, Poetry Interpretation, Prose Interpretation, Duet Acting, One-Act Plays).

- Once a participant has performed a script at a T★CAL Meet he/she may not perform that script again in any category at other subsequent T★CAL Meets.
- Once a script is performed by any participant at a school, that script may not be performed in any category by any other participant at that same school the next year; it may be re-introduced after the expiration of one year.
- A participant/school cannot compete with the same selection in different categories at the Meet.
- Selections and speeches must not violate the moral standards of T★CAL (e.g. include profanity, racial slurs, religious slanders, sexual innuendos, vulgar content, and/or occult).
- Participants/schools are responsible for ensuring that scripts meet T★CAL standards. A script may be deemed objectionable and participant disqualified at any time during the Meet in the discretion of the T★CAL Meet Chair. However, if a participant/school wishes to confirm acceptability of a script before the Meet, a copy of the script may be submitted to the T★CAL State Office at least six weeks before the scheduled Meet; T★CAL will review and notify the school within 10 working days if the submitted selection is denied. Submitted scripts are considered in their complete form unless objectionable words/or phrases are clearly stricken from the script (this should be obvious to T★CAL reviewers).

T★CAL FINE ARTS & ACADEMICS MANUAL

DISTRICT & STATE MEET CRITERIA

- Selections, including juvenile fiction, must be chosen from published sources with an ISBN number.
- All scripts must be in English; use of foreign words/phrases within selections is permissible.

Music/Dance/Human Video Criteria

- Participants may compete in up to two categories (e.g., vocal solo, vocal ensemble, instrumental solo, instrumental ensemble) plus band, choir, human video and/or interpretive dance entries.
- 7th and 8th graders may compete in a choir and/or band (not solos or ensembles) provided more than half of the members are in grades 9-12. (Unless otherwise approved by the T★CAL State Office.)
- Selections must be chosen from copyrighted material.
- Instrumental pieces may be performed with or without music (see specific categories). *Minimal background vocals are permitted if a CD used; however, participant(s) must be clearly audible at all times; background vocals are allowed for ensembles.*
- A warm-up location will be provided to participants who wish to warm-up prior to performing.
- A participant/school cannot compete with the same selection in different categories at the Meet.
- Once a selection has been performed, that selection may not be performed in any category by any other participant at that same school the next year; it may be re-introduced after the expiration of one year.
- *Acceptable Selection Genre:* Christian, inspirational, classical, Broadway, folk, or other music with wholesome themes. All music choices must be free of questionable or sensual content or words. If a school wishes to ensure that a music selections is acceptable (will not be disqualified at the competition), the school should submit the selection to the T★CAL State Office no later than six weeks before the scheduled Meet; T★CAL will review and notify the school within 10 working days if the submitted selection is denied.
- *Groupings:* Dances will be judged separately from other music events. Instrumental-only events are split from other vocal categories. Vocal solos are split from ensembles, bands, and choirs.

Art Criteria

- Participants may compete in up to three categories, limited to one entry per Art category; not including on-site drawing.
- All photos, drawings, and paintings must be framed, matted, mounted, or canvassed.
- Artwork submitted must be the original work of participant whether produced in a class or independently.
- Once a participant has entered a piece of artwork at a T★CAL Meet he/she may not enter that piece again in any category at other subsequent T★CAL Meets.
- Artwork must not violate the moral standards of T★CAL. To confirm acceptability of artwork before the Meet, it must be submitted to the T★CAL State Office no later than 6 weeks before the Meet; T★CAL will review and notify the participant school of its denial of the submitted selection within 10 working days.
- Art teachers/judges will do a pre-judging walk-through to confirm proper placement in Art categories.

Grounds for Disqualification or Participant-provided penalty

- *Performance time:* A 30-second grace period applies to selections running over or under the stated time limit; selections running over or under the 30-second grace period will receive a 2 points flat penalty.
- Judges may recommend disqualification or assess penalty points on the judging sheet if he/she believes that material, performance, attire, and/or other requirements of the event are not met.
- T★CAL staff has discretion at any time before, during, or after the Meet to participant-provided penalize or disqualify a participant's performance based upon Event rules, Meet requirements, or T★CAL policies. The T★CAL Fine Arts Commissioner will consider reasonably presented arguments regarding same; however, T★CAL's discretion in the final decision is non-appealable.

Awards

- The Awards Assembly for events will be held at the conclusion of the Meet (See Rounds Schedule).
- T★CAL will declare the school with the highest accumulative score the Meet Champion; schools placing 1st-3rd will receive a school plaque.
- Points are assessed per category using the following point scale: 1st – 10pts; 2nd – 8pts; 3rd – 6pts; 4th – 4pts; 5th – 2pts; and 6th – 1pt. Ribbons are awarded for 1st-6th places. A school plaque will be awarded for 1st-3rd places in Yearbook, Band, One-Act, and Choir.
- Tie placers will be awarded the same place & applicable ribbon; the next highest point holder will receive the immediately subsequent place & applicable ribbon and so on & so forth thru 6th place.
- For choirs, bands, and theatre only one award will be issued to the school team.

NOTE: SEE BALLOTS FOR ADDITIONAL JUDGING CRITERIA.

SPEECH/DRAMA CATEGORY & DESCRIPTION

Memorization & Performance Guide

Time limit

T★CAL FINE ARTS & ACADEMICS MANUAL

DISTRICT & STATE MEET CRITERIA

<p>DUET ACTING</p> <ul style="list-style-type: none"> ➤ Objective: Two participants believably portray characters in a scene or scenes; emotion, facial expression, and body language are used to enhance character(s) and scene development. ➤ Script scene should be self-contained with a beginning, middle, and end ➤ No musical scenes are permitted but brief singing as part of the script is allowed ➤ Selections must be from a single source (humorous or dramatic) ➤ Participants may only use the floor, up to two chairs, and themselves 	<p>>Memorized Introduction required >Memorization of script required</p>	<p>5-10 minutes</p>
<p>MONOLOGUE</p> <ul style="list-style-type: none"> ➤ Objective: Participant believably portrays one or more characters in a scene or scenes; emotion, facial expression, and body language are used to enhance character(s) and scene development. ➤ Selections must be from a single source (humorous or dramatic) ➤ Participants may only use one chair, the floor, and themselves ➤ Gestures and pantomime are permitted to enhance the performance ➤ Minimal narration permitted for scene transitions 	<p>>Memorized Introduction required >Memorization of script required</p>	<p>5-10 minutes</p>
<p>PERSUASIVE SPEAKING</p> <ul style="list-style-type: none"> ➤ Objective: Participant uses oral speech to persuade listeners to agree with stated viewpoint. ➤ The participant should utilize an introduction, body and conclusion consisting of organized arguments representing critical reasoning (e.g. pros/cons, comparisons, past/present/future, supported meanings) ➤ Four topics are distributed at Registration; participant selects one of the four topics for his/her speech ➤ Preparation permitted until round begins ➤ Movement and gestures are permitted to enhance performance ➤ No props are permitted 	<p>>Memorization of speech not required >One 3x5 handwritten index card permitted >60% eye contact expected</p>	<p>2-4 minutes</p>
<p>POETRY INTERPRETATION</p> <ul style="list-style-type: none"> ➤ Objective: One participant utilizes voice and facial interpretation of selection to make selection believable. ➤ Selections from plays, screenplays, speeches or song lyrics are not permitted. Original pieces are not permitted. ➤ Selections may humorous or dramatic and may come from one author or may be a combined set of selections clearly related to a common theme ➤ Participant must hold manuscript (a book or a binder – not a folder or a notebook) ➤ Limited gestures permitted to enhance the performance ➤ Participant may not walk the floor 	<p>>Memorized Introduction required (if 2 or more selections are chosen around a common theme, this should be addressed in the Introduction) >Memorization not required >Script is read; 60% eye contact expected</p>	<p>2-5 minutes</p>
<p>PROSE INTERPRETATION</p> <ul style="list-style-type: none"> ➤ Objective: Participant utilizes voice and facial interpretation of story to make selection believable. ➤ Selections from plays, screenplays, speeches or song lyrics are not permitted. Original pieces are not permitted. ➤ Selections must be from a single source (humorous or dramatic) ➤ Participant must hold manuscript (a book/binder – not a folder or a notebook); limited gestures permitted to enhance the performance ➤ Participant may not walk the floor 	<p>>Memorized Introduction required >Memorization not required >Script is read; 60% eye contact expected</p>	<p>4-7 minutes</p>
<p>SPEECH/DRAMA CATEGORY & DESCRIPTION</p>	<p>Memorization & Performance</p>	<p>Time limit</p>

T★CAL FINE ARTS & ACADEMICS MANUAL
DISTRICT & STATE MEET CRITERIA

	Guide	
<p>ONE-ACT PLAY</p> <ul style="list-style-type: none"> ➤ Objective: Three or more participants believably portray characters in a scene(s); emotion, facial expression, and body language used to enhance character(s) & scene development ➤ Reader's Theatre, selections that are predominantly narration, monologues, duet acts, choral speaking are not permitted; Musicals are permitted; Script cutting within one published work is permitted in order to make the maximum time. ➤ <i>Effects</i>: Sound effects must be plot-driven or part of the script; costuming and props permitted; Scenery, sets or lights not permitted; No more than 4 chairs and simple props are permitted ➤ Set up between entries should be no more than 5 minutes ➤ Scene changes that do not stop action of the play are counted in total time; however, if a scene change stops the action of the play, timing will cease for no more than 60 seconds ➤ No line prompting is permitted by anyone on or off stage ➤ <i>Each school is allowed only one One-Act Play entry; does not count toward the 3 event limit per participant in Speech/Drama</i> 	<p>>No Introduction required >Memorization of script required</p>	10-15 minutes
<p>READER'S THEATRE</p> <ul style="list-style-type: none"> ➤ Objective: 3-6 participants believably re-create characters in a scene(s); emotion, stance, facial expression used to enhance character(s) & scene development; singing is not permitted, unless the story does not make sense without the it; narration is permitted. The total effect should carry the listener away mentally to the time and place of the story. Reader's Theatre interpretation is "theatre of the mind," not acting as in a stage play ➤ Selections may be humorous or dramatic and may come from one author or may be a combined set of selections clearly related to a common theme ➤ Manuscripts must be used using an "off-stage" focus; participants do not look at one another ➤ No costuming, scenery, sets, lights, props, or makeup are permitted other than stools, chairs, boxes, music stands (only chairs will be provided by tournament) ➤ No line prompting is permitted by anyone on or off stage ➤ Actor movement is limited to an imaginary 2'x2' area from the beginning location; gestures and pantomime should be extremely limited ➤ <i>Each school is allowed only one Reader's Theatre entry; does not count toward the 3 event limit per participant in Speech/Drama</i> 	<p>>Memorized introduction required >Memorization not required >Script is read; 60% eye contact expected</p>	6-8 minutes

ACADEMIC CATEGORY & DESCRIPTION	Testing Guide	Time limit
<p>CREATIVE WRITING</p> <ul style="list-style-type: none"> ➤ Objective: Use writing skills to create an original short story ➤ A prompt is furnished; all participants have same prompt ➤ Each story is evaluated by its excellence in creativity, organization, grammatical correctness of style ➤ No minimum number of words; maximum length is one college-ruled notebook page; writing on front and back of every other line 	<p>>Only participant-provided pen and paper allowed in testing room</p>	Max 30 minutes
<p>CURRENT EVENTS</p> <ul style="list-style-type: none"> ➤ Objective: Utilize knowledge of what is occurring in our world ➤ Material is drawn from happenings/events starting August 1st of the school year to the week before the Meet ➤ Material covered is national and international news 	<p>>Only participant-provided pen allowed in testing room; answers marked on Answer Key >75 multiple choice</p>	Max 60 minutes

T★CAL FINE ARTS & ACADEMICS MANUAL
DISTRICT & STATE MEET CRITERIA

ACADEMIC CATEGORY & DESCRIPTION	Testing Guide	Time limit
<ul style="list-style-type: none"> ➤ Sources must come from internet and newspaper sources 	questions	
<p>READY WRITING</p> <ul style="list-style-type: none"> ➤ Objective: Use writing skills to persuade readers to agree with stated viewpoint. Participant should analyze for purpose, format, and point of view ➤ The participant selects one of the four furnished topics for his/her essay ➤ Preparation is not permitted ➤ Must write essay on every other line of paper 	>Only participant-provided pen and paper allowed in testing room >No minimum or maximum number of words required	Max 30 minutes
<p>SCIENCE</p> <ul style="list-style-type: none"> ➤ Objective: Utilize knowledge of basic scientific principles, equations, discoveries, and information. ➤ Significance of experiments is more important than obscure details ➤ Material is drawn from the areas of Physical Science, Physics, Biology, and Chemistry ➤ Designed to reach all levels of competitors ➤ Simple commercial battery-powered silent non-graphing and non- qwerty scientific hand-held calculators may be used such as TI36 and HP33 (TI83, TI84, TI 89 and similar formatted calculators not allowed); pencils prohibited 	>Only participant-provided pen allowed in testing room >75 multiple choice questions >Answers marked on Answer Key	Max 60 minutes
<p>SPELLING</p> <ul style="list-style-type: none"> ➤ Objective: Utilize knowledge of individual word power skills ➤ Participants need a wide-range, high-school level knowledge of spelling and vocabulary words ➤ Word list is not given ahead of time ➤ Two-part test (Part 1: Oral dictation with one context sentence; Part 2: Multiple choice) 	>Only participant-provided pen allowed in testing room >Pencils prohibited >75 questions	Max 45 minutes
<p>MATHEMATICS</p> <ul style="list-style-type: none"> ➤ Objective: Utilize a basic knowledge of high school mathematics ➤ Testing materials area drawn from the areas of high school Algebra I and Geometry ➤ Simple commercial battery-powered silent non-graphing and non- qwerty hand-held scientific calculators may be used (may <u>not</u> use TI89, TI92 and like models); pencils prohibited 	>Only participant-provided pen and blank paper allowed in testing room >75 multiple choice questions >Answers marked on Answer Key	Max 60 minutes
<p>ADVANCED MATHEMATICS</p> <ul style="list-style-type: none"> ➤ Objective: Utilize a wide-range of knowledge in advanced high school mathematics ➤ Testing materials area drawn from the areas of Algebra I, Algebra II, Geometry, Trigonometry, and Calculus ➤ Simple commercial battery-powered silent non-graphing and non- qwerty hand-held scientific calculators may be used (may <u>not</u> use TI89, TI92 and like models); pencils prohibited 	>Only participant-provided pen and blank paper allowed in testing room >75 multiple choice questions >Answers marked on Answer Key	Max 60 minutes
<p>NUMBER SENSE</p> <ul style="list-style-type: none"> ➤ Objective: Utilize his/her ability to make quick mental calculations ➤ Concepts used are addition, subtraction, multiplication, division, proportions, basic algebra, analysis, number theory, and mathematic notations ➤ Test is mental problem solving; 30 questions ➤ Not permitted: Calculations on paper and calculators. Penalty points are given for every marked out answer 	>Only participant-provided pen allowed in testing room >Pencils prohibited >30 questions	Max 12 minutes

T★CAL FINE ARTS & ACADEMICS MANUAL
DISTRICT & STATE MEET CRITERIA

MUSIC CATEGORY & DESCRIPTION	Memorization Guide	Time limit
INSTRUMENTAL ENSEMBLE ➤ Includes a minimum of 2 and maximum of 4 participants and their instruments ➤ Sheet music not required; copyright information required ➤ No prompting or help is permitted by anyone on/off stage; no background vocals	>Memorization of selection not required	Max 3 minutes
INSTRUMENTAL SOLO ➤ Performed by a single participant and a single instrument; piano/keyboard accompaniment permitted ➤ Sheet music not required; copyright information required ➤ No prompting or help is permitted by anyone on/off stage	>Memorization of selection not required	Max 3 minutes
VOCAL ENSEMBLE ➤ Includes duets, trios, and quartets; minimum of 2 and maximum of 4 participants ➤ Sheet music not required; copyright information required ➤ No prompting or help is permitted by anyone on/off stage ➤ CD, guitar, or piano/keyboard accompaniment permitted; no background vocals	>Memorization of selection required	Max 3 minutes
VOCAL SOLO ➤ Performed by a single participant ➤ Sheet music not required; copyright information required ➤ No prompting or help is permitted by anyone on/off stage ➤ CD, guitar, or piano/keyboard accompaniment permitted	>Memorization of selection required	Max 3 minutes
ORIGINAL COMPOSITION SOLO OR ENSEMBLE ➤ Vocal or instrumental solos, duets, trios and ensembles of 3 or more participants ➤ Choirs or Performing Bands enter below; a conductor is not permitted ➤ Acapella, CD, guitar, or piano/keyboard accompaniment permitted (by participant or another person) ➤ The music composition must be an unpublished work or written by the performer and can never have been used at any former Meet	>Memorization not required	Max 2 minutes
CHOIR: <i>Each school is allowed only one choir entry</i> ➤ Includes 5 or more participants ➤ The use of a conductor is allowed, but the conductor may not sing with the group ➤ Sheet music may be used by vocalists only if selection is played by live musician(s); copyright information required ➤ Minimal movement is permitted ➤ CD, guitar, or piano/keyboard accompaniment permitted	>Memorization of selection required for vocalists	Max 4 minutes
PERFORMING BAND: <i>Each school is allowed only one band entry</i> ➤ Includes 5 or more participants with 3 or more instruments (instruments are defined as non-vocal accompanying devices) ➤ Does not include marching bands ➤ The use of a conductor is not permitted ➤ Sheet music not required; copyright information required	>Memorization of selection required	Max 4 minutes
INTERPRETIVE DANCE: <i>Each school may enter up to two dance entries</i> ➤ Participants may perform in only one dance ➤ Maximum of 8 dancers (all dances will be judged against each other regardless of the number of dancers) ➤ Performances must be choreographed ➤ Costumes are permitted provided midriffs and shoulders are not exposed, tops not low-cut or sheer, and tights or leggings worn under short or sheer skirts; dance pants are permitted provided there is a distinguishable difference between pants and leggings ➤ Suggestive, improper, indecent, or vulgar choreography, movements, or gestures are prohibited and will disqualify the entry ➤ Hand props permitted (no sets) ➤ CD, guitar, or piano/keyboard accompaniment permitted ➤ Sheet music not required; copyright information required	>Memorization of selection required	Max 4 minutes

T★CAL FINE ARTS & ACADEMICS MANUAL
DISTRICT & STATE MEET CRITERIA

MUSIC CATEGORY & DESCRIPTION	Memorization Guide	Time limit
<p>HUMAN VIDEO: <i>Each school may enter up to two human video entries</i></p> <ul style="list-style-type: none"> ➤ Participants may perform in only one human video ➤ Maximum of 8 dancers (all human videos will be judged against each other regardless of the number of dancers) ➤ Performances must be choreographed ➤ Costumes are permitted provided midriffs and shoulders are not exposed, tops not low-cut or sheer, and tights or leggings worn under short or sheer skirts; dance pants are permitted provided there is a distinguishable difference between pants and leggings ➤ Suggestive, improper, indecent, or vulgar choreography, movements, or gestures are prohibited and will disqualify the entry ➤ Hand props permitted (no sets) ➤ CD, guitar, or piano/keyboard accompaniment permitted ➤ Sheet music not required; copyright information required 	<p>>Memorization of selection required</p>	<p>Max 4 minutes</p>

T★CAL FINE ARTS & ACADEMICS MANUAL

DISTRICT & STATE MEET CRITERIA

<p>ART CATEGORY & DESCRIPTION</p> <p><i>With the exception of Yearbook, all entries require a label containing Name of participant, School, and Title of the entry</i></p>
<p>BLACK & WHITE/MONOCROMATIC DRAWINGS</p> <ul style="list-style-type: none"> ➤ Dry media drawings (includes pencil, graphite, charcoal, and chalk) ➤ Entries require minimum size of 5" x 7"
<p>COLORED DRAWINGS</p> <ul style="list-style-type: none"> ➤ Includes dry drawing color media using one or more colors (colored pencil, colored ink, multi-color scratchboard, pastel, chalk, and markers) ➤ Entries require minimum size of 5" x 7"
<p>BLACK & WHITE PEN & INK DRAWINGS</p> <ul style="list-style-type: none"> ➤ Dry media drawings in black & white pen & ink (colored pen & ink should be entered under colored drawings) ➤ Entries require minimum size of 5" x 7"
<p>PAINTINGS</p> <ul style="list-style-type: none"> ➤ Includes all types of paints ➤ Entries require minimum size of 5" x 7"
<p>GRAPHIC DESIGN</p> <ul style="list-style-type: none"> ➤ Posters, front cover designs for products such as CD/DVD/records, brochures, fashion & other illustrations, calligraphy, and advertisements ➤ Entries require minimum size of 5" x 7" (CD/DVD, etc. covers must be expanded to this size)
<p>MIXED MEDIA</p> <ul style="list-style-type: none"> ➤ Two or more medias are combined for a 2D result (cannot extend over ¼ inch above surface); includes collage (enter 3D designs extending more than ¼ inch above surface under Crafts) ➤ Entries require minimum size of 5" x 7"
<p>PRINTMAKING</p> <ul style="list-style-type: none"> ➤ Art made by the process of printing, usually on paper, fabric or another flat surface for a 2D result. Includes monotype, collograph, woodcut/linocut, intaglio, lithography, etching, stamping, sponge painting, etching, silkscreen printing & other printing methods ➤ Entries require minimum size of 5" x 7"
<p>SCULPTURE</p> <ul style="list-style-type: none"> ➤ 3-dimensional art objects created by carving, casting, constructing, assembling or other shaping techniques from any material including but not limited to: clay, cardboard, metal, acrylic, wood, glass, stone, marble, textiles, plastics, and found objects ➤ Objects can be no larger than 24" x 36" and be easily moved by carrying (no heavier than 20 lbs.). Entries may be mounted or displayed on stands at participant's discretion (not required)
<p>BLACK & WHITE PHOTOGRAPHY</p> <ul style="list-style-type: none"> ➤ Altered or manipulated photographs are not permitted ➤ Entries require minimum size of 5" x 7"
<p>COLOR PHOTOGRAPHY</p> <ul style="list-style-type: none"> ➤ Altered or manipulated photographs are not permitted ➤ Entries require minimum size of 5" x 7"
<p>DIGITALLY-MANIPULATED PHOTOGRAPHY</p> <ul style="list-style-type: none"> ➤ Digitally/computer altered or manipulated photographs (not as black & white or color photography entries) ➤ Entries require minimum size of 5" x 7"
<p>ON-SITE DRAWING</p> <ul style="list-style-type: none"> ➤ Participant is to draw the material/items presented ➤ Participant must bring own supplies (paper, pencil, ink, etc.); drawing paper must be a minimum size of 11" x 13" ➤ Individual or combined usage of graphite/colored pencils, ink, or chalk is permitted ➤ Maximum time limit: 75 minutes
<p>GENERAL CRAFTS</p> <ul style="list-style-type: none"> ➤ Includes paper mache', functional pottery, jewelry, and 3D mixed media (extending more than ¼ inch above surface) ➤ Entries may be mounted or displayed on stands at participant's discretion (not required)
<p>YEARBOOK</p> <ul style="list-style-type: none"> ➤ A school is limited to one yearbook entry; does not count toward the two entered categories ➤ Entries are those prepared from the previous school year

T★CAL FINE ARTS & ACADEMICS MANUAL

DISTRICT & STATE MEET CRITERIA

T★CAL STATE MEET: PROPOSED MUSIC and DANCE SCHEDULING

Additional rooms will be added for overbooked rooms as needed

Double-Booked Entries: Performance order will be adjusted to accommodate those participants entered in two categories scheduled for the same time/round.

Lunch Note: Students will need to take lunch break when they are not scheduled to compete in a Round

THURSDAY SCHEDULE

ART: All art entries must be registered at the Art Registration desk by 8 a.m. Art teacher walk-through will occur at 8:30 a.m. to ensure artwork is placed in proper Categories. Judging begins at 9 a.m.

ROUND/ROOM	ROOM 1	ROOM 2	STAGE
ROUND I Time: 135 min. 8:30-10:45 a.m.	INSTRUMENTAL SOLOS	ON-SITE DRAWING	VOCAL SOLOS
ROUND II Time: 90 min. 11-12:30 p.m.			VOCAL ENSEMBLES INSTRUMENTAL ENSEMBLES
ROUND III Time: 90 min. 1:00-2:30 p.m.			ORIGINAL COMPOSITION SOLOS & ENSEMBLES INTERPRETIVE DANCE HUMAN VIDEO
ROUND IV Time: 75 min 2:45-4 p.m.			ON THE STAGE: Round IVA: CHOIRS (1 st) Round IVB: PERFORMING BANDS (2 nd)
ROUND V Time: 75 min 4:15-5:30 p.m.			ON THE STAGE: ONE ACTS

AWARDS ASSEMBLY for ART, MUSIC, AND DANCE will occur at the end of the day on Friday.

T★CAL FINE ARTS & ACADEMICS MANUAL
DISTRICT & STATE MEET CRITERIA

T★CAL STATE MEET: PROPOSED SPEECH & ACADEMICS SCHEDULING

Students may compete in only one event per Round.

Additional rooms and split events will be added depending upon the final entry totals per event. Poetry, Prose, Monologue & Duet Finals: If events are scheduled in more than one room due to entry totals, then the top three ranked participants will advance to a Finals round.

Lunch Note: Students will need to take lunch break when they are not scheduled to compete in a Round

FRIDAY SCHEDULE

<i>ROUND/ROOM</i>	<i>ROOM 1A & 1B as needed</i>	<i>ROOM 2</i>	<i>ROOMS 3 and 4</i>
ROUND I Time: 60 min. 8:00-9:00 a.m.	<u>Part 1: 8:30-9:00a.m.</u> READY WRITING (30 minutes) <u>Part 2: 9:15-9:30 a.m.</u> NUMBER SENSE (12 minutes, max)	PERSUASIVE SPEAKING	POETRY INTERP. (2 sections; TOP 3 in each go to FINALS round) READER'S THEATRE
ROUND II Time: 75 min. 9:15-10:30 a.m.	CREATIVE WRITING (30 minutes)	SCIENCE (60 minutes)	MONOLOGUE (2 sections; TOP 3 in each go to FINALS round)
ROUND III Time: 90 min. 10:45-12:15 p.m.	MATHEMATICS (60 minutes)	ADVANCED MATH (60 minutes)	DUET ACTING (2 sections; TOP 3 in each go to FINALS round)
ROUND IV Time: 75 min. 12:30-1:45 p.m.	CURRENT EVENTS (60 minutes)	SPELLING (45 minutes)	PROSE INTERP.

3:30-4:30 p.m. FINALS ROUND – ALL EVENTS except One-Act and Reader's Theatre

TABULATION BREAK

5:30 p.m. (tentative) ACADEMIC/SPEECH & DRAMA AWARDS